

GALLERY HOMES



BY VARRIALE

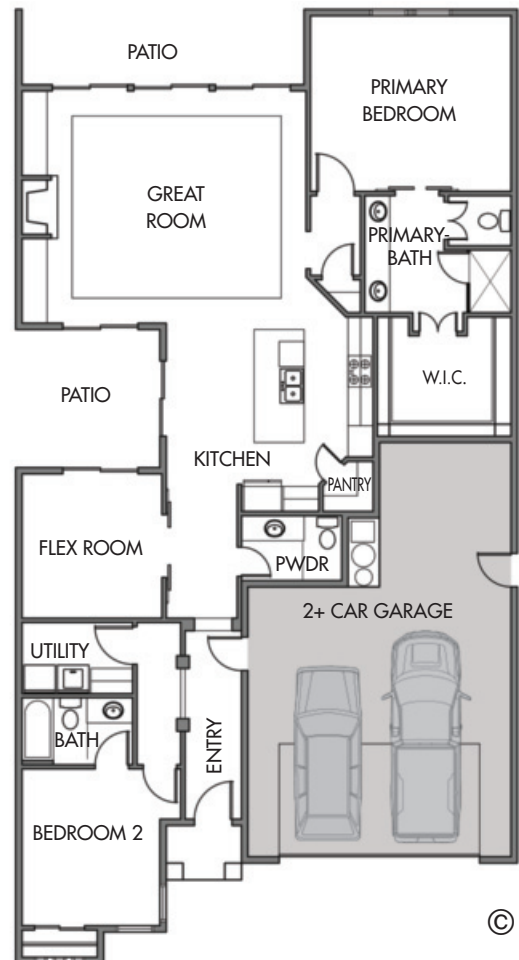
by Varriale



# TURNBERRY

- PLAN:** **TURNBERRY**  
by **Gallery Homes by Varriale**
- ADDRESS:** 9516 S. Blue Oak Ave.  
Kuna, ID 83634
- ASF:** 1906, Single Level
- BEDROOMS:** 2 plus Flex
- BATHS:** 2.5
- GARAGE:** Oversized 2+ Car
- COMMUNITY:** MERINO COVE
- HOME SITE:** Lot 10 / Block 1
- FEATURES:** This single level open concept plan, with 2 large bedrooms plus study and 2.5 baths, makes for easy living both inside and out. The private courtyard is centrally located and creates the unique ability to enjoy a view of the patio from the kitchen, great room and study.

**LEARN MORE:** [www.GalleryHomesIdaho.com](http://www.GalleryHomesIdaho.com)



YOUR HOME • OUR PASSION

[www.GalleryHomesIdaho.com](http://www.GalleryHomesIdaho.com) | SHELLEY PHILLIPS/REALTOR/SALES MANAGER 208-850-1350



Prices and specifications are subject to change without prior notice. © Copyright 2017 Gallery Homes by Varriale