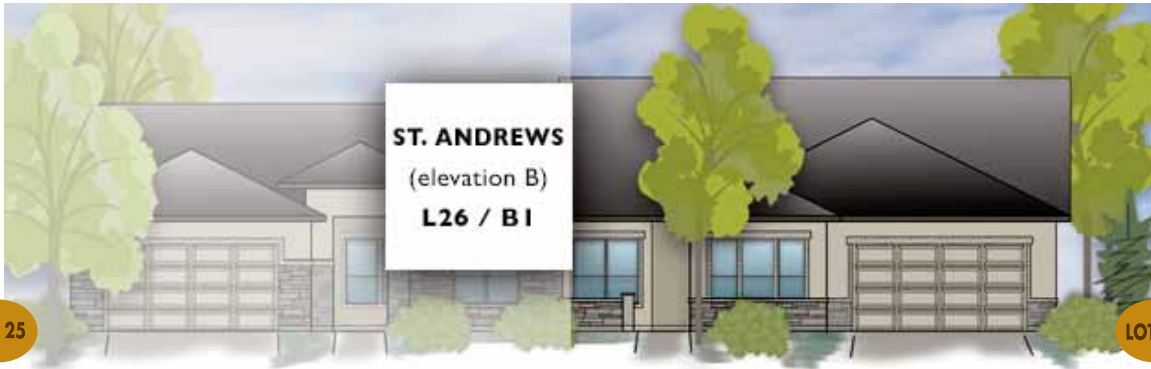


GALLERY HOMES



BY VARRIALE

by Varriale



ST. ANDREWS

PLAN: **ST. ANDREWS** (Elevation B)
by **Gallery Homes by Varriale**

ADDRESS: 6571 N. Spindrift Way

MLS #: TBD

ASF: 2151, Single Level

BEDROOMS: 3 plus Flex Room

BATHS: 3

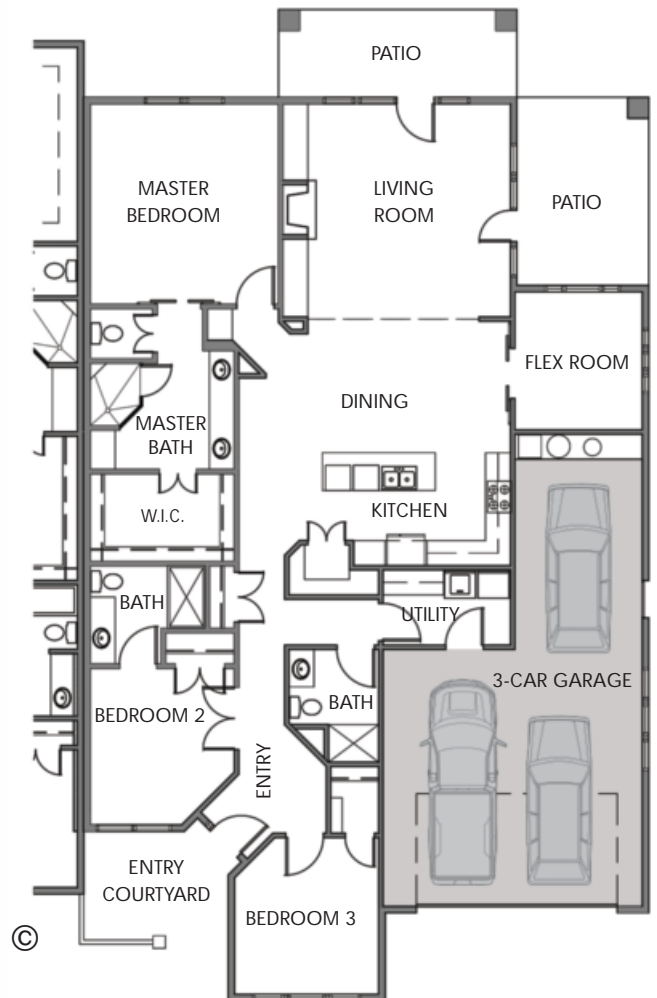
GARAGE: 3-Car, 598 ASF

COMMUNITY: OLIVE TREE at SPURWING

HOME SITE: Lot 26 / Block 1 / 3rd Fairway

FEATURES: Indoor/outdoor upscale living on Spurwing's 3rd fairway. Park 3 cars or 2 cars and a golf cart in the oversized garage. Lock-and-go with maintenance-free yard care and snow removal.

LEARN MORE: www.GalleryHomesIdaho.com



YOUR HOME • OUR PASSION

www.GalleryHomesIdaho.com | SHELLEY PHILLIPS/REALTOR/SALES MANAGER 208-850-1350



Prices and specifications are subject to change without prior notice. © Copyright 2017 Gallery Homes by Varriale