

GALLERY HOMES



BY VARRIALE

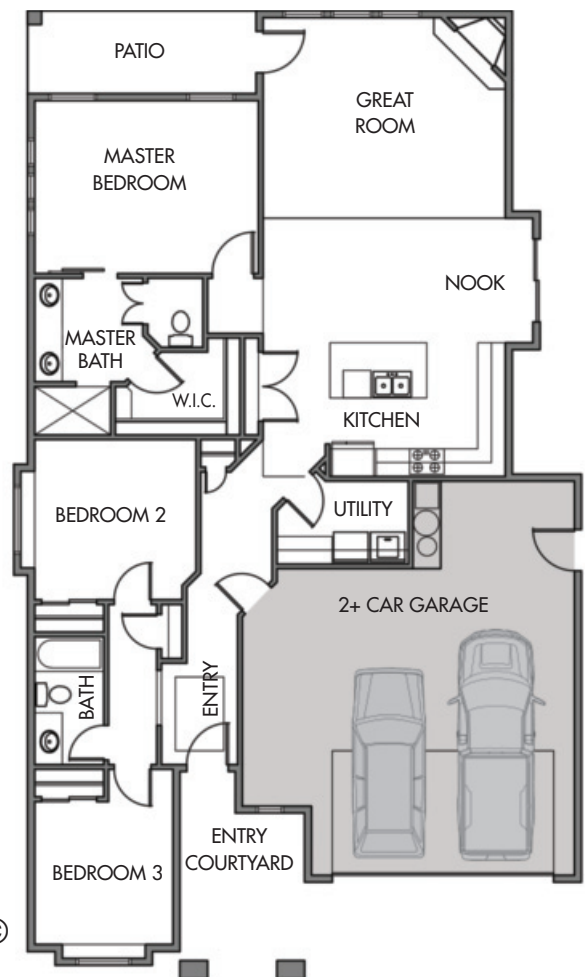
by Varriale



ACADIA

- PLAN:** **ACADIA**
by **Gallery Homes by Varriale**
- ADDRESS:** 6611 N. Crantini Way
- ASF:** 1660, Single Level
- BEDROOMS:** 3
- BATHS:** 2
- GARAGE:** Oversized 2+ Car
- COMMUNITY:** OLIVE TREE AT SPURWING
- HOME SITE:** Lot 2 / Block 2
- FEATURES:** This single level open concept home has a large great room and kitchen with plenty of natural light. Comes standard with wood floors, stainless steel appliances, 2+ car garage and more. Exterior features stone/stucco and tile roofing. Lock-and-go with maintenance-free yard care and snow removal.

LEARN MORE: www.GalleryHomesIdaho.com



YOUR HOME • OUR PASSION

www.GalleryHomesIdaho.com | SHELLEY PHILLIPS/REALTOR/SALES MANAGER 208-850-1350



BOISE PREMIER
REAL ESTATE

Prices and specifications are subject to change without prior notice. © Copyright 2017 Gallery Homes by Varriale