

GALLERY HOMES



BY VARRIALE

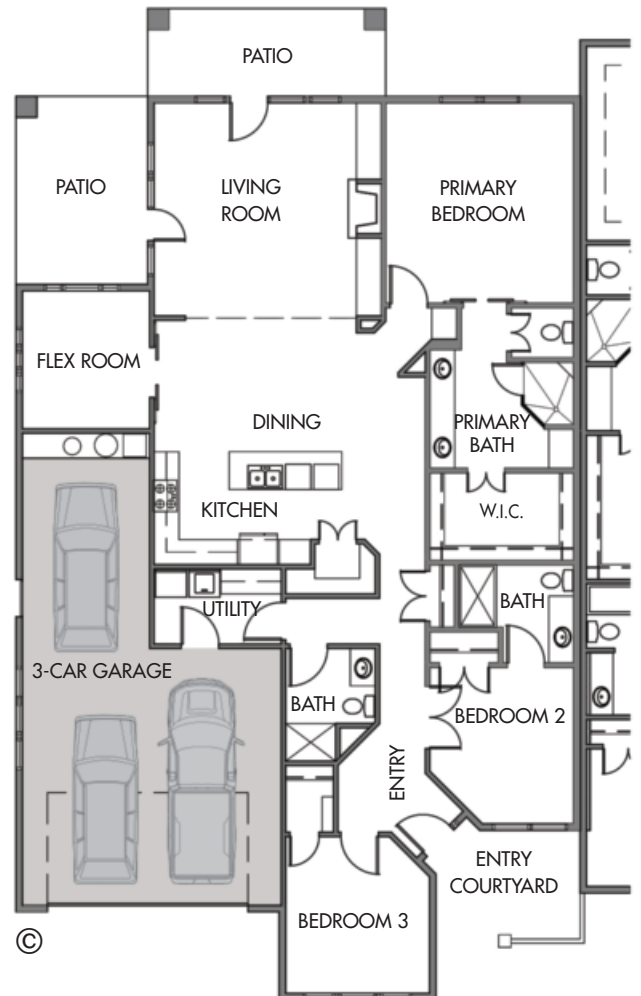
by Varriale



## ST. ANDREWS

- PLAN:** **ST. ANDREWS** (Elevation B)  
by **Gallery Homes by Varriale**
- ADDRESS:** 6619 N. Spindriff Way  
Meridian, ID 83646
- ASF:** 2151, Single Level
- BEDROOMS:** 3 plus Flex Room
- BATHS:** 3
- GARAGE:** 3-Car, 598 ASF
- COMMUNITY:** OLIVE TREE at SPURWING
- HOME SITE:** Lot 29 / Block 1 / 3rd Fairway
- FEATURES:** Indoor/outdoor upscale living on Spurwing's 3rd fairway. Park 3 cars or 2 cars and a golf cart in the oversized garage. Lock-and-go with maintenance-free yard care and snow removal.

**LEARN MORE:** [www.GalleryHomesIdaho.com](http://www.GalleryHomesIdaho.com)



YOUR HOME • OUR PASSION

[www.GalleryHomesIdaho.com](http://www.GalleryHomesIdaho.com) | SHELLEY PHILLIPS/REALTOR/SALES MANAGER 208-850-1350



BOISE PREMIER  
REAL ESTATE

Prices and specifications are subject to change without prior notice. © Copyright 2017 Gallery Homes by Varriale