



by Varriale

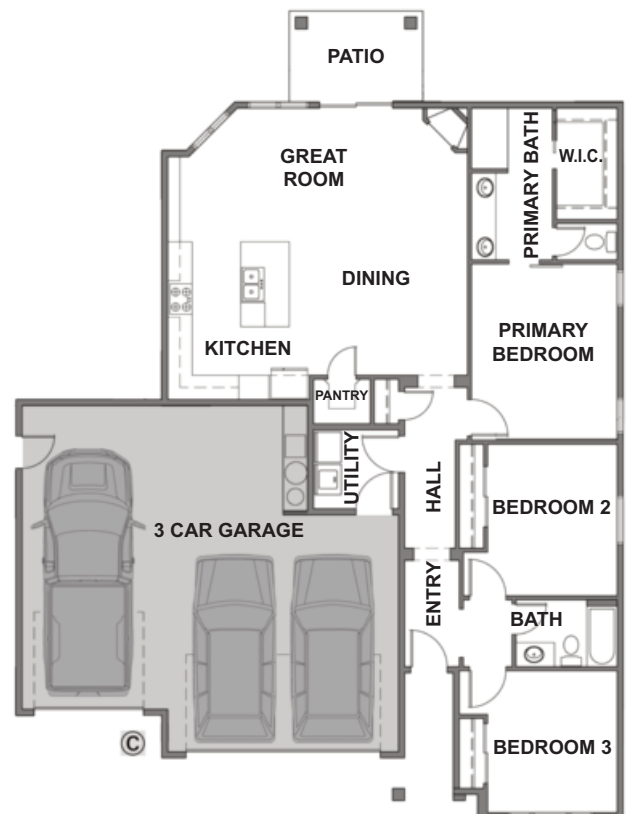


JACOB

PLAN: JACOB
by Gallery Homes by Varriale
ASF: 1,579, Single Level
BEDROOMS: 3
BATHS: 2
GARAGE: 3 Car
COMMUNITY: OLIVE TREE AT SPURWING

The Jacob is a charmer! Illuminated by large windows, you'll love the open feeling of the great room concept. Features include wood floors, stainless steel appliances, custom cabinetry and beautiful counter tops. Primary bedroom includes dual vanities, full tile shower, and spacious walk-in closet.

LEARN MORE: www.GalleryHomesIdaho.com



© Copyright 2017 Gallery Homes by Varriale, Contractor #RCE-41760

Prices and specifications are subject to change without prior notice.

YOUR HOME • OUR PASSION



CONTACT: SHELLEY PHILLIPS, REALTOR / SALES MANAGER, 208-850-1350
Residential & New Construction, Owner of Prime Realty, Silvercreek Realty Group