



by Varriale



# KATMAI

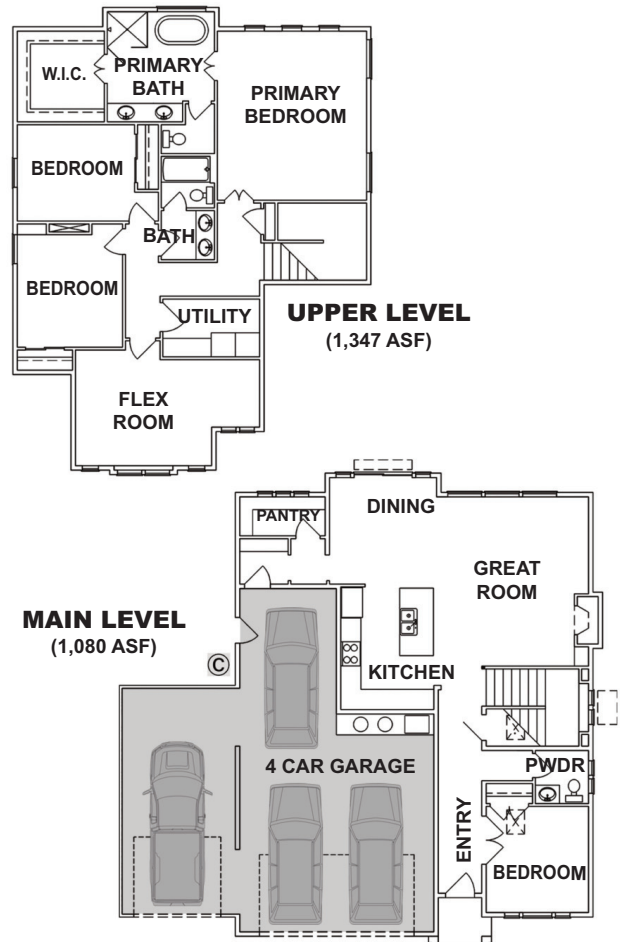
- PLAN:** KATMAI  
by **Gallery Homes by Varriale**
- ASF:** 2,427
- BEDROOMS:** 4 Plus Flex
- BATHS:** 2.5
- GARAGE:** 4 Car (ASF 899)

Elegant home with 4 bedrooms plus flex room and 2.5 baths. Single garage bay features a 9' garage door.

**LEARN MORE:** [www.GalleryHomesIdaho.com](http://www.GalleryHomesIdaho.com)

© Copyright 2017 Gallery Homes by Varriale, Contractor #RCE-41760

Prices and specifications are subject to change without prior notice.



YOUR HOME • OUR PASSION



**CONTACT: SHELLEY PHILLIPS, REALTOR / SALES MANAGER, 208-850-1350**  
Residential & New Construction, Owner of Prime Realty, Silvercreek Realty Group