



by Varriale



SAN SAVINO

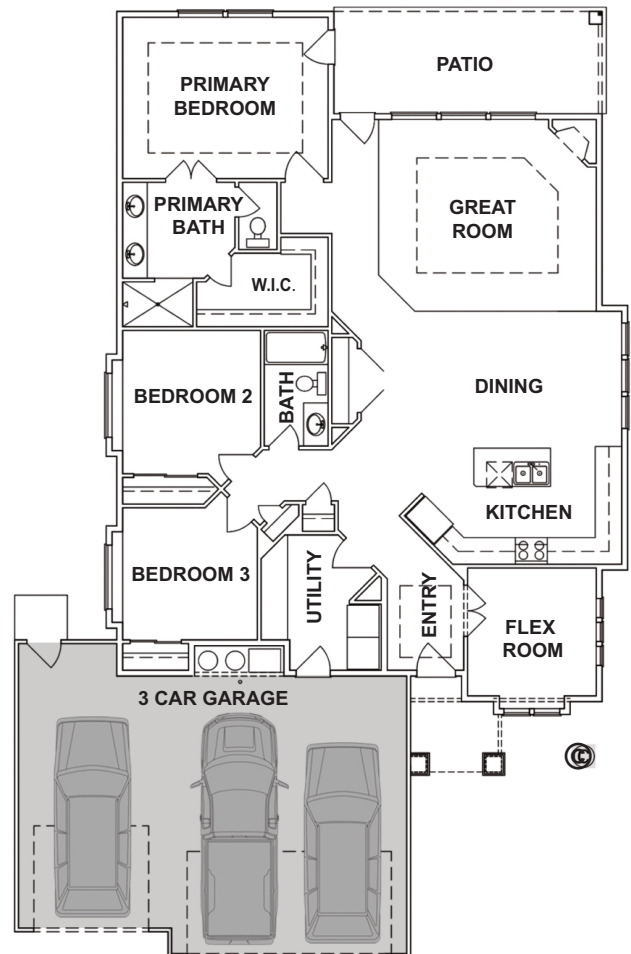
- PLAN:** **SAN SAVINO**
by **Gallery Homes by Varriale**
- ASF:** 1,861, Single Level
- BEDROOMS:** 3 Plus Flex
- BATHS:** 2
- GARAGE:** 3 Car

This single level, open concept home, features three bedrooms plus flex room. The San Savino has a large great room and kitchen with plenty of natural light. Comes standard with real wood floors, stainless steel appliances, three car garage and more.

LEARN MORE: www.GalleryHomesIdaho.com

© Copyright 2017 Gallery Homes by Varriale, Contractor #RCE-41760

Prices and specifications are subject to change without prior notice.



YOUR HOME • OUR PASSION



CONTACT: SHELLEY PHILLIPS, REALTOR / SALES MANAGER, 208-850-1350
Residential & New Construction, Owner of Prime Realty, Silvercreek Realty Group