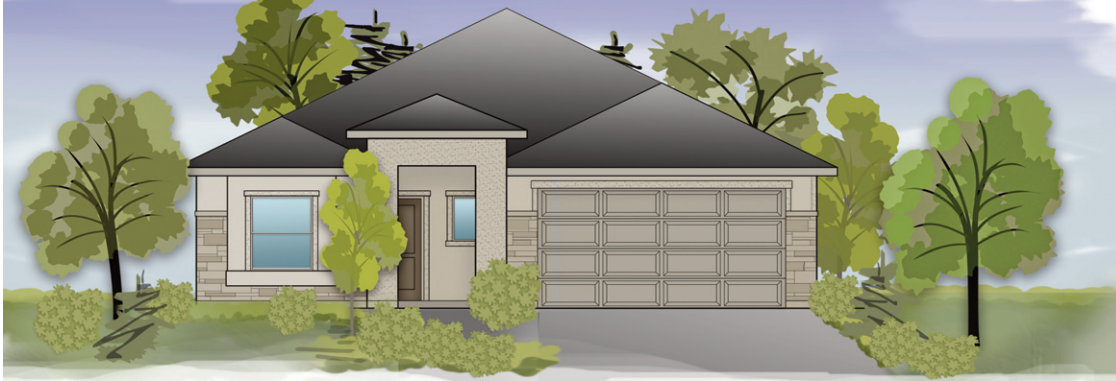




by Varriale



ACADIA

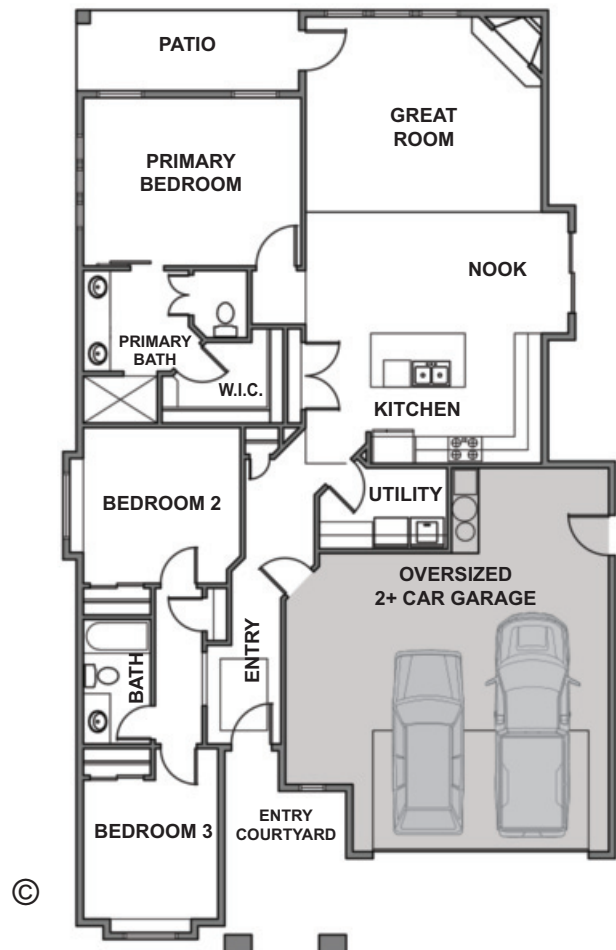
- PLAN:** ACADIA
by **Gallery Homes by Varriale**
- ASF:** 1,660, Single Level
- BEDROOMS:** 3
- BATHS:** 2
- GARAGE:** OVERSIZED 2+ Car
- COMMUNITY:** OLIVE TREE AT SPURWING

This single level open concept home has a large great room and kitchen with plenty of natural light. Comes standard with wood floors, stainless steel appliances, 2+ car garage and more. Exterior features stone/stucco and tile roofing.

LEARN MORE: www.GalleryHomesIdaho.com

© Copyright 2017 Gallery Homes by Varriale, Contractor #RCE-41760

Prices and specifications are subject to change without prior notice.



YOUR HOME • OUR PASSION



CONTACT: SHELLEY PHILLIPS, REALTOR / SALES MANAGER, 208-850-1350
Residential & New Construction, Owner of Prime Realty, Silvercreek Realty Group